



# Quick Start Guide

Getting started with the  
actidata Ti-NAS RT-6, RT-7, RT-8

## Table of Contents

1. Introduction
2. Overview: Panel & Connections
3. Rack Installation
4. Getting started
5. Access to BIOS and IPMI
6. Monitoring / Disable Alarm
7. Further Information

## 1. Introduction

Before starting any installation or additional configuration, please note:

1. Before unpacking, check boxes and systems on damages as well as double checking the contents. If any damage is recognized inform your supplier immediately to protect your rights of warranty.
2. Before starting, please check the scope of delivery:
  - a. 1x actidata System with the correct hardware content
  - b. 2x power cord
  - c. Documentation and Software-driver on USB-Stick, Service-Certificate and Quick Start Guide
  - d. Optional HDDs / SSDs or/and LTO media
  - e. Rack-Kit incl. mounting screws
3. Only experienced experts should install and operate the system.
4. Use the system only in supported IT-environments.
5. Before starting check all connections, also Power Connection and correct power values.
6. All warranty disclaims in case of wrong mounting, wrong connecting, wrong operation, or any use where the system is not built for.
7. Please take care of backups. actidata Storage Systems GmbH assumes no liability for data loss.

### Service-Registration:

Each system is supplied with a service certificate. We recommend to register the service online:  
[www.actidata.com](http://www.actidata.com)

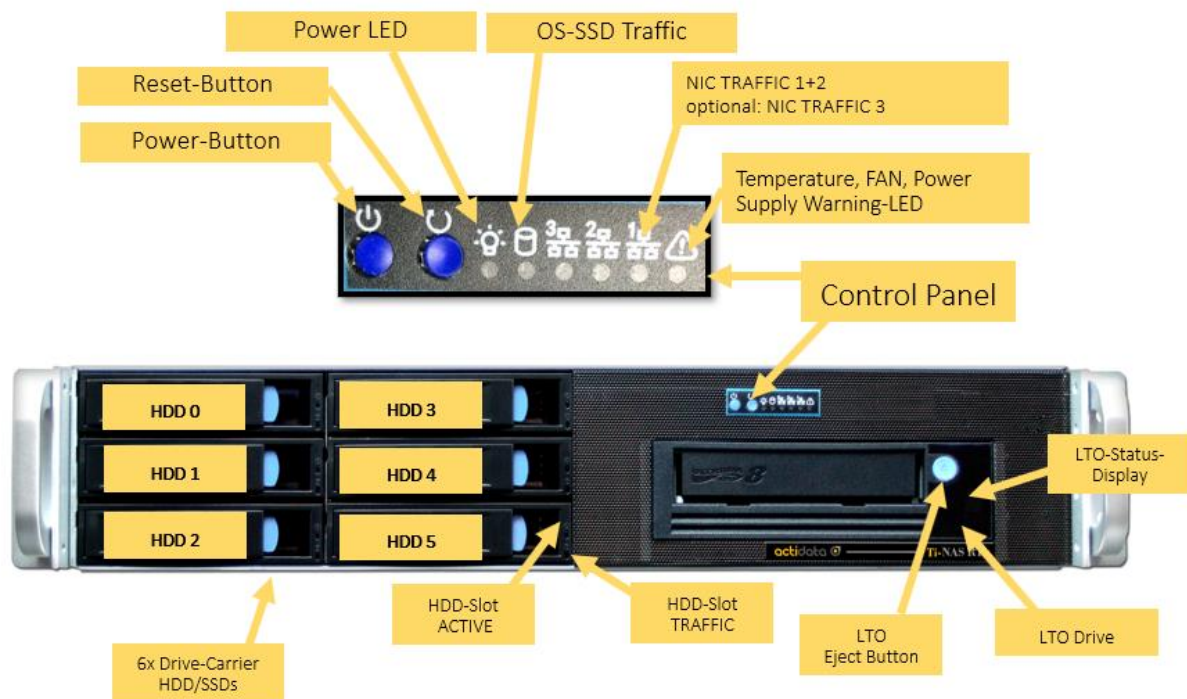
## Contact to Our Technical Support

T: +49 (0) 2 31/96 36 32 – 35 (Technical Support)  
E: [service@actidata.com](mailto:service@actidata.com)  
I: [www.actidata.com](http://www.actidata.com)

## 2. Overview: Panel and Connections

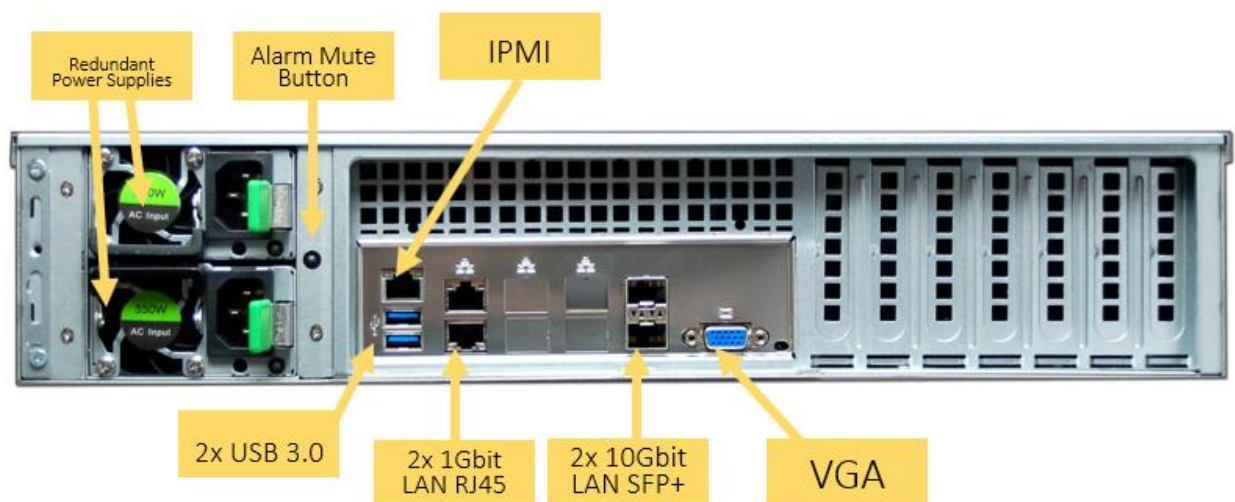
The control elements of the actidata Ti-NAS RT-6, RT-7, RT-8 are shown below. Depending on the configuration, the actidata Ti-NAS system is equipped with a LTO-drive and HDDs, SSDs of different capacity and number.

On the front you can find the following elements and displays:



**At the back** you will find the following system interfaces:

- Network Interfaces:
  - Dual 10Gb Ethernet SFP+
  - Dual 1Gb Ethernet RJ45
- Management-Interface:
  - 1Gb Ethernet RJ45, IPMI 2.0 (Redfish)
- Keyboard+Mouse, VGA / USB 3.0
- Alarm Mute Button (for Power Supply)

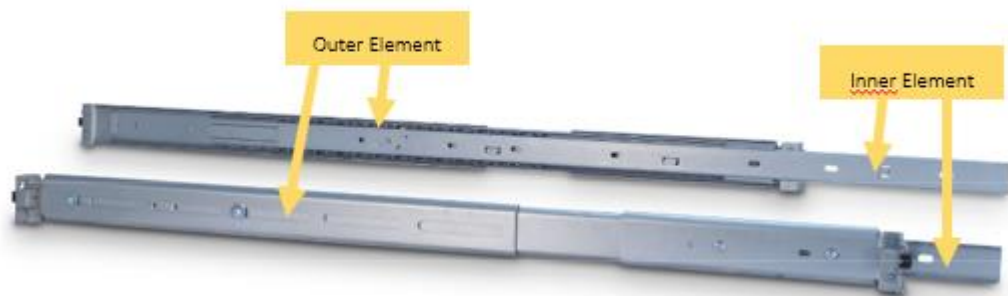


**SFP+ Transceiver:**

SFP+ Transceivers are not part of the scope of delivery. It is recommended to use certified SFP+ Transceivers which are compatible to your LAN switch.

### 3. Rack Installation

We recommend, to install the Ti-NAS RT by qualified personnel with at least two people.



1. The rack rails are marked with the letters **L** (left) and **R** (right).
2. Separate the inner and outer elements of the two rack rails by pressing the locking lever.
3. Install the outer elements in your 19" rack at the same height. Please reserve at least 2U height for the Ti-NAS RT. Please also note the specifications of the rack.
4. Fasten the two inner elements with three screws on the left and right of the chassis (see picture below).
5. Move the pre-assembled chassis with the inner elements onto the outer elements in the rack. The safety lever has to be hold during the insertion of the Ti-NAS RT.
6. Secure the server with two screws at the front.

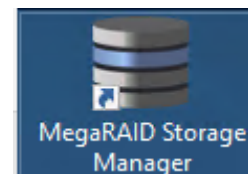


## 4. Getting started

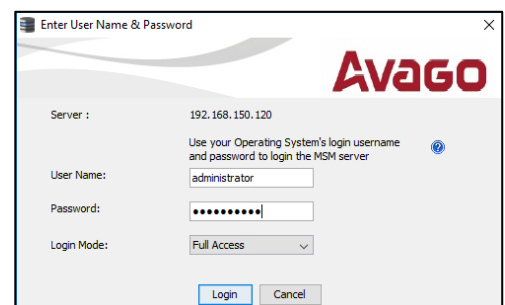
After you have got an overview of the control panel and interfaces of the actidata Ti-NAS RT, the system can be started. After pushing the power-on button at the front, the actidata system starts the boot routines. Now you can connect via RDP (Remote Desktop). The access data, the defined network IPs can be found in the enclosed document „Important Information“, the license key is located on the left side of the product.

The Windows Storage Server for IOT operating system is pre-installed, the login screen appears. After logging into Windows Storage Server, the system can now...

- ... be integrated into the existing IT network.
- ... manage the RAID-configuration of the installed hard drives. To do this, the MegaRAID management program must be started.



Login / Password  
**administrator / <Windows-Password>**



## 5. Access BIOS and IPMI

### BIOS

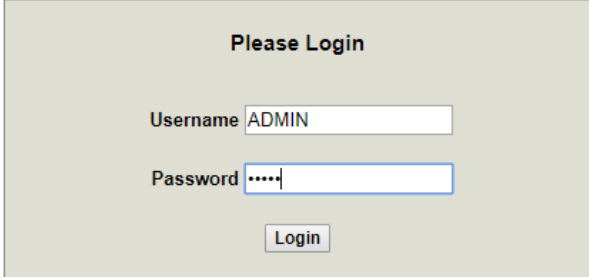
You can open the System-BIOS by connecting keyboard and monitor to the system and pressing [DEL] during Boot/Start-Up. After finishing the Boot-Routines, the Bios will be loaded. Here you can enter the IP-address of the IPMI-interface.

### IPMI

You can access the IPMI via IPMI-RJ45 GbE NIC on the back of the NAS. There is a separate, web-based GUI available:

Login Name / Default Password  
**ADMIN / ADMIN**

The IPMI-GUI allows to check detailed temperature and fan information. You are able to Power-On the NAS by remote as well. You can also download the IPMI-logs, by clicking the Button „Save Event Logs“. Please change the password of the IPMI after the first access.



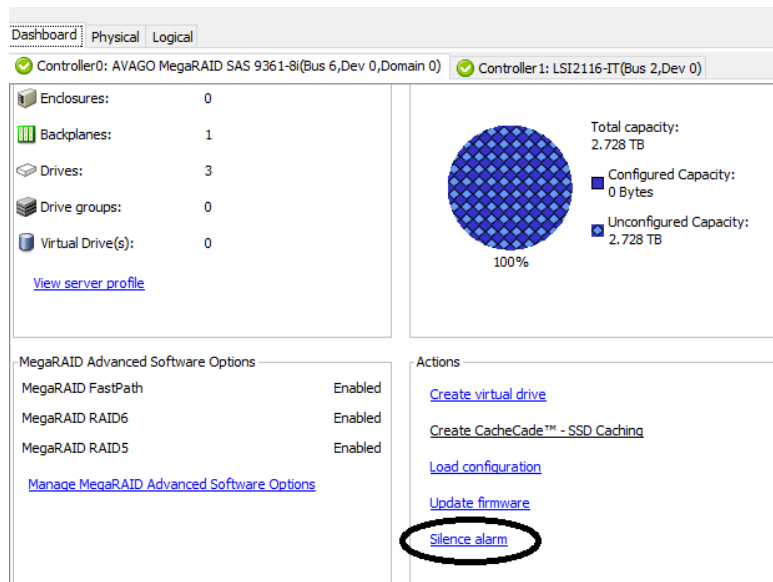
The screenshot shows a web-based login interface with a light gray background. At the top, it says "Please Login". Below this, there are two input fields: "Username" with the text "ADMIN" entered, and "Password" with five dots representing a masked password. A "Login" button is positioned below the password field.

## 6. Monitoring / Disable Alarm

HDD-/RAID-Monitoring	MegaRaid Storage Manager	Acoustic Alarm, Windows-Notification, E-Mail
Temperature- (HBA, CPU, RAM) and FAN-Warning	IPMI	Warning-LED, Windows-Notification, E-Mail, SNMP

**Disable Power Supply Alarm** by pressing the Alarm Mute Button on the backside.

**Disable RAID-Alarm** in the MegaRAID Storage Manager. Select „Silence Alarm“ on the Dashboard.



The screenshot shows the MegaRAID Storage Manager interface. At the top, there are tabs for 'Dashboard', 'Physical', and 'Logical'. Below this, two controllers are listed: 'Controller 0: AVAGO MegaRAID SAS 9361-8i(Bus 6,Dev 0,Domain 0)' and 'Controller 1: LSI2116-IT(Bus 2,Dev 0)'. The main area is divided into several sections:

- Hardware Status:** A list showing 0 Endosures, 1 Backplanes, 3 Drives, 0 Drive groups, and 0 Virtual Drive(s). A 'View server profile' link is present.
- Capacity Information:** A circular progress indicator shows 100% usage. Text indicates 'Total capacity: 2.728 TB', 'Configured Capacity: 0 Bytes', and 'Unconfigured Capacity: 2.728 TB'.
- MegaRAID Advanced Software Options:** A table showing 'MegaRAID FastPath', 'MegaRAID RAID6', and 'MegaRAID RAID5' all set to 'Enabled'. A link to 'Manage MegaRAID Advanced Software Options' is provided.
- Actions:** A list of links including 'Create virtual drive', 'Create CacheCade™ - SSD Caching', 'Load configuration', 'Update firmware', and 'Silence alarm'. The 'Silence alarm' link is circled in black.



## 7. Further Informations

### Drive Carrier:

The drive carriers are ready for 2.5" or 3.5" HDDs or SSDs. To remove the drive carrier, press the light-blue release button at the top so that the locking lever is opened. The Drive Carrier can be removed from the system by carefully pulling the locking bar. The assembly is carried out by carefully pushing the drive carrier into the free opening slot, located at the system front. The drive carrier is locked by closing the locking lever.

### LTO drive:

In order to use the integrated LTO-drive, a Microsoft compatible backup software is required (e.g. Veeam Community Edition). You can unload LTO-media by using the eject button. We recommend to use compatible Barrium-Ferrite LTO-media only.

Ti-NAS RT-6	Ti-NAS RT-7	Ti-NAS RT-8
LTO-4 Ultrium read	LTO-5 Ultrium read	TypeM Ultrium read/write
LTO-5 Ultrium read/write	LTO-6 Ultrium read/write	LTO-7 Ultrium read/write
LTO-6 Ultrium read/write	LTO-7 Ultrium read/write	LTO-8 Ultrium read/write

### Important:

Removing and inserting the Drive Carrier requires little force. Excessive force or the use of any tool may impair the function of the system or destroy the device. In these cases the warranty is no longer valid.

### Important:

When re-equipping, only qualified screws are to be used for installing other HDD / SSDs. Using the wrong screws can damage the system. In these cases the system warranty expires.

### Important:

When installing HDDs / SSDs, which are not qualified by the manufacturer, the function may be restricted and / or malfunctions may occur that are not covered by the warranty services of actidata Storage Systems GmbH. The system guarantee is void in the event of improper installation or installation / configuration of third-party components.





## Contact to manufacturer

actidata Storage Systems GmbH  
Indupark  
Wulfshofstr. 16  
D-44149 Dortmund, (Germany)  
T: +49 (0) 2 31/96 36 32 – 0 (Switch Board)  
T: +49 (0) 2 31/96 36 32 – 35 (Service Hotline)  
E: [service@actidata.com](mailto:service@actidata.com)  
I: [www.actidata.com](http://www.actidata.com)

### All right reserved

actidata Storage Systems reserved all rights on this document. Any copy in print or electronical way or use outside the described use are forbidden. Changes will be done without any notice. No liability in case of any mistake or error in this document.